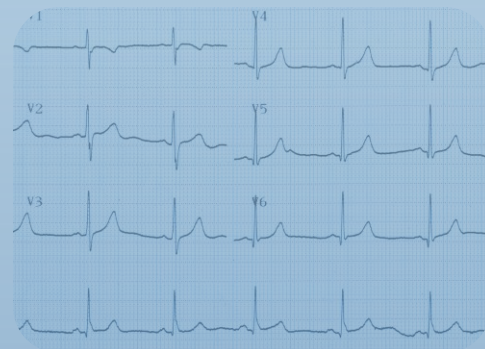
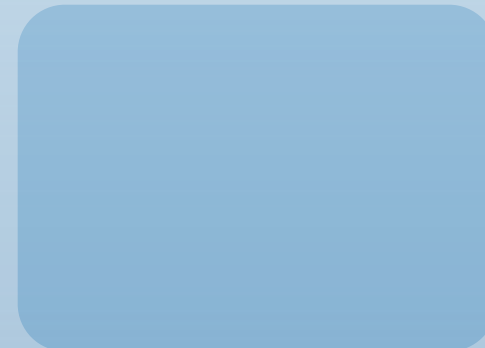
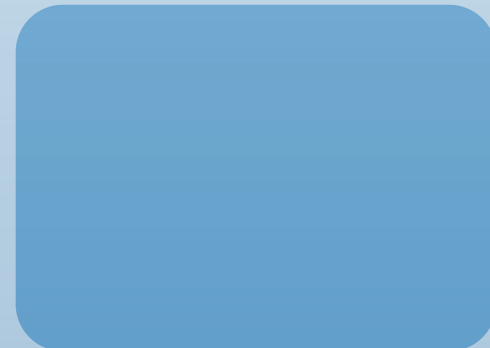




MyHealth<sup>®</sup>  
ACCESS NETWORK

# HIE Q & A

Presented by MyHealth and OFMQ Panelists



# HIE Office Hours Decorum

- Panelists, please mute yourself when you are not actively speaking
  - Attendees are automatically muted in the webinar
    - To speak, please utilize the raise hand function and a host will unmute you
  - To ask a question, please use the Q&A function
  - The Presentation slide deck will be provided in an email following today's session
    - Today's session and past session presentations are all available on the MyHealth Website
- [Resources – HIE Office Hours]

# OKSHINE Program Reminders

## OKSHINE Connection Fee Assistance Program

- Any organization that employs licensed Healthcare providers in the state of Oklahoma is eligible.
- Program covers all one-time fees from MyHealth to get providers connected to the state-designated HIE
  - Other related fees may be considered
- **Secure Connection Fee Assistance by applying at [OKSHINE.gov](https://www.okshine.gov)**

## SoonerSelect Provider Incentive Program

- Eligible providers can receive an estimated 28% increase in base fee schedule reimbursements for qualifying care and services
  - +18.5% base fee schedule increase for providers participating in SoonerSelect
  - +9.5% for Medicaid providers who participate in MyHealth, both sending data & utilizing the HIE
- **To apply, complete the [MyHealth Application](#)**



# QUESTIONS?



**Lance Butler**

**Dir. Client Services  
MyHealth Access Network**



**Ashley Rhude**

**HIT Manager  
OFMQ**



**Katy Decker**

**Dir. Clinical Informatics  
MyHealth Access Network**



**Mike McStay**

**Clinical Consultant  
OFMQ**

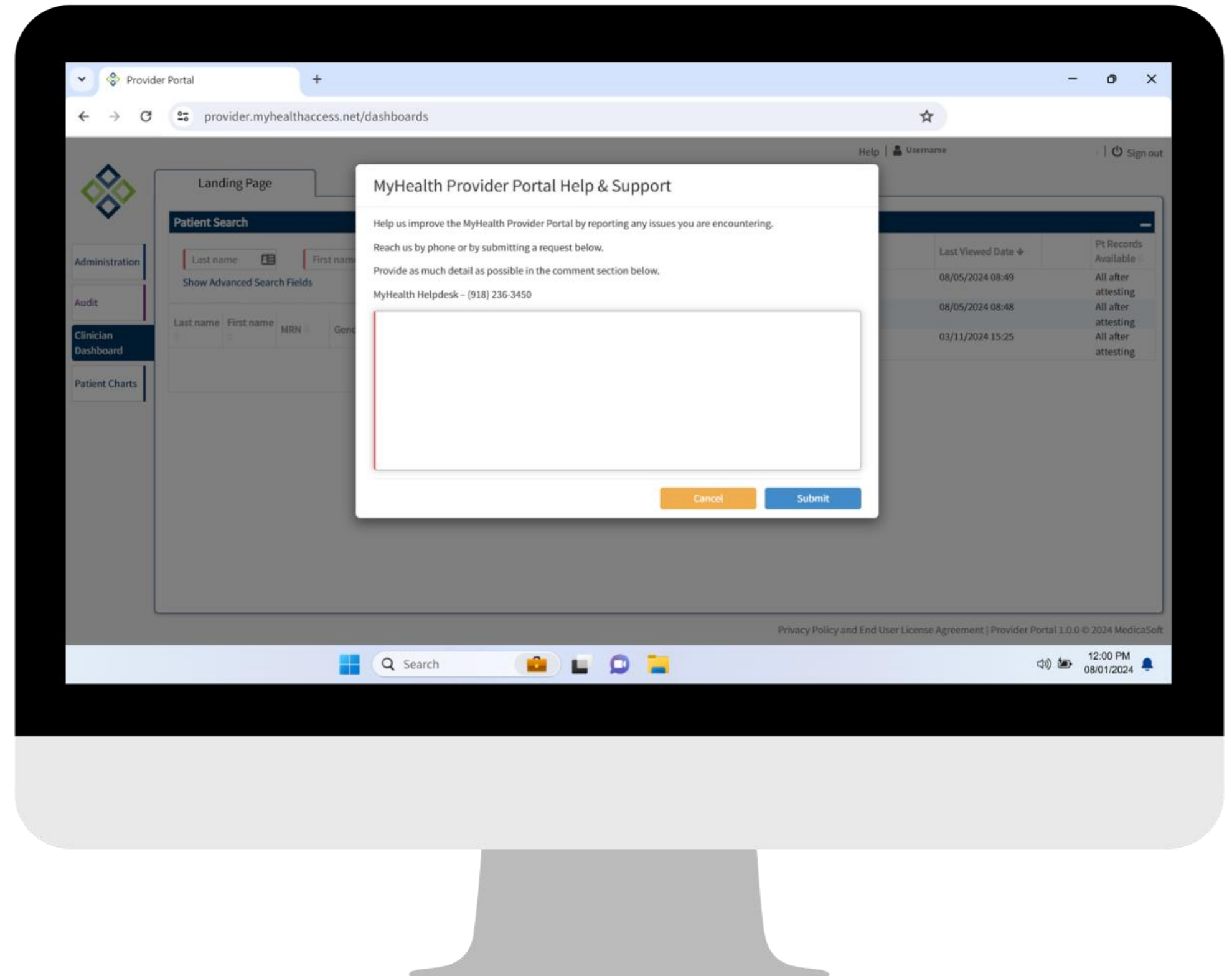


**Joe Walker**

**Compliance Officer  
MyHealth Access Network**

# Helpdesk Instructions

1. Login to the Provider Portal
2. Locate and click the **HELP** button on the upper, right side
3. Report any issues you are encountering in the text box provided
4. Call the MyHealth Helpdesk at (918) 236-3450



# THANK YOU!

**Next Office Hours Session: 08/21/2024 at 12:15 PM**





# CONTACT

---



MyHealth Client Services  
(918) 236 – 3434  
MyHealth@myhealthaccess.net



Ashley Rhude, MS, RHIA, CHTS-IM  
405-443-9251  
ARhude@ofmq.com



Michael McStay  
405.302.3206  
MMcStay@ofmq.com

